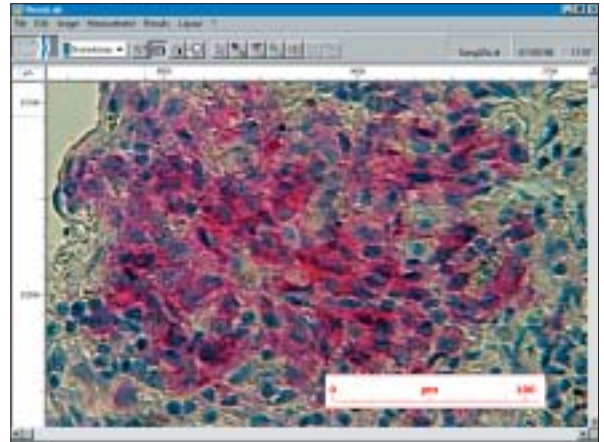
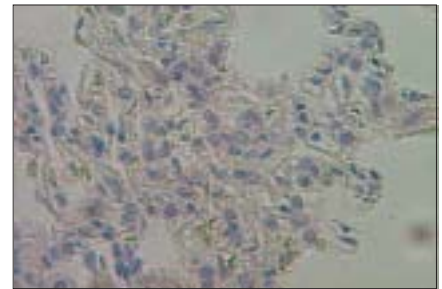
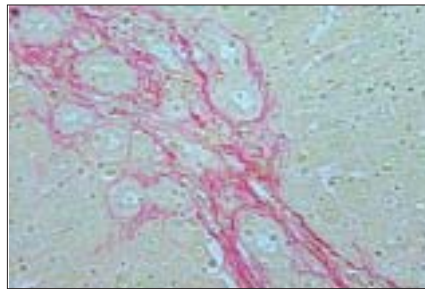
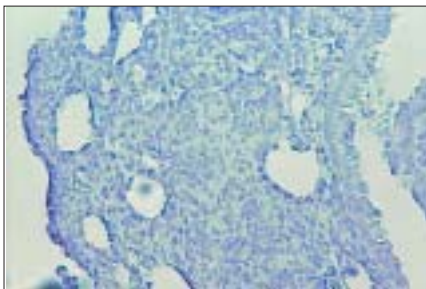


*Histolab has been designed to allow you to make a variety of measurements on various types of histological tissue. Histolab is rich in functionality in the areas of processing images and numerous interactive and powerful measurement tools.*

*We have taken particular care with regards to simplicity and comfort of use for the user, and we wanted the documents produced to be usable straight away : with printing of the images and results and storage in formats that can be manipulated with other applications, statistics on all analyzed structures.*



## Acquiring the Images



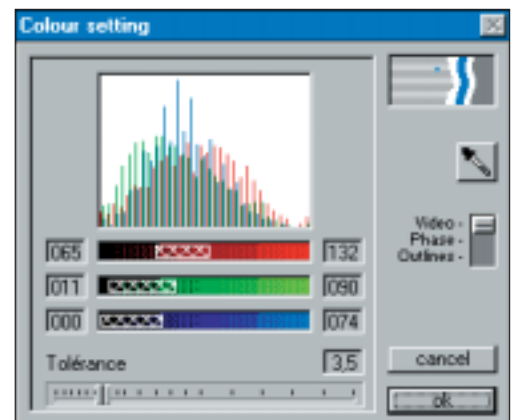
*Histolab provides an analysis of all the tissues in a histological section and, for each one of them, an analysis of the cells and/or of subcellular structures visible to a microscope.*

## Parameters and Processing



Parameters of the study

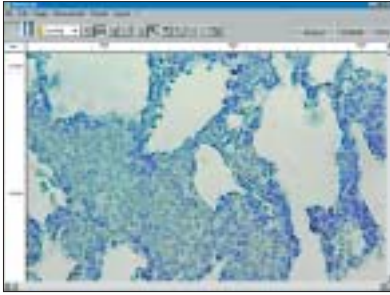
*Histolab provides the user with a whole range of measurement tools, thus adapting to many kinds of biological structures: counting, following cell membranes, modeling nuclei with ellipses, automatic recording of a tissue surface associated with specific staining.*



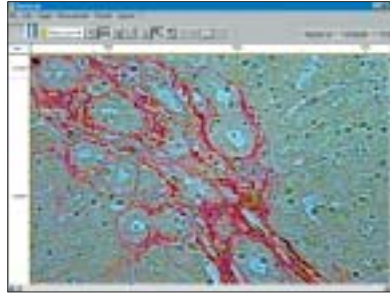
Colour analysis in RGB mode

## Measurements

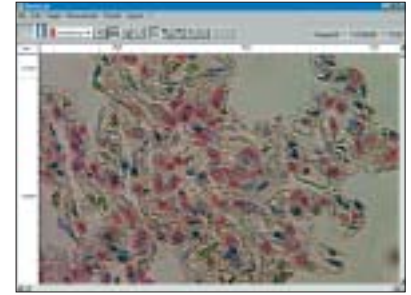
The measurements provided include: position, length, width, equivalent diameter, perimeter, area. The results are all expressed in real units, either in a comprehensive table or summed with statistical analysis.



Determining the number of nuclei in the granulomas of a lung section



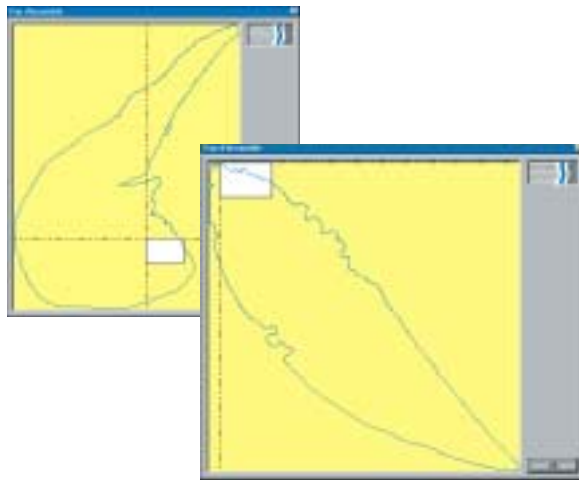
Cellular density of the fibrous zones in a liver section



Determining the nuclei surface in a lung section

## Results

Histolab is not limited by its field of view : it is connected with the microscope stage. This gives you the choice to limit the analysis to each field or extend it to the whole tissue section. Measurements can be plotted on an overview map and whole section data can be gathered.



The images and the list of values and statistics can be formatted into a single report.

## Characteristics

<b>Optics</b>	Microscope fitted with a camera and camera adaptor
<b>Video</b>	RGB color camera (Mono or 3 CDD)
<b>Mechanics</b>	Motorised stage, Accurite or Heidenhain encoders
<b>Vision</b>	8 or 24 bit RGB color acquisition, real-time overlaying with a non-destructive overlay (overlays move with the specimen)
<b>Computer</b>	PC, Windows XP



GT Vision Ltd  
Offices in UK and USA

UK Tel (+44) 1440 714737

e-mail: sales@gt-vision.com

USA Tel :(+001) 240 235 4118

www.gt-vision.com